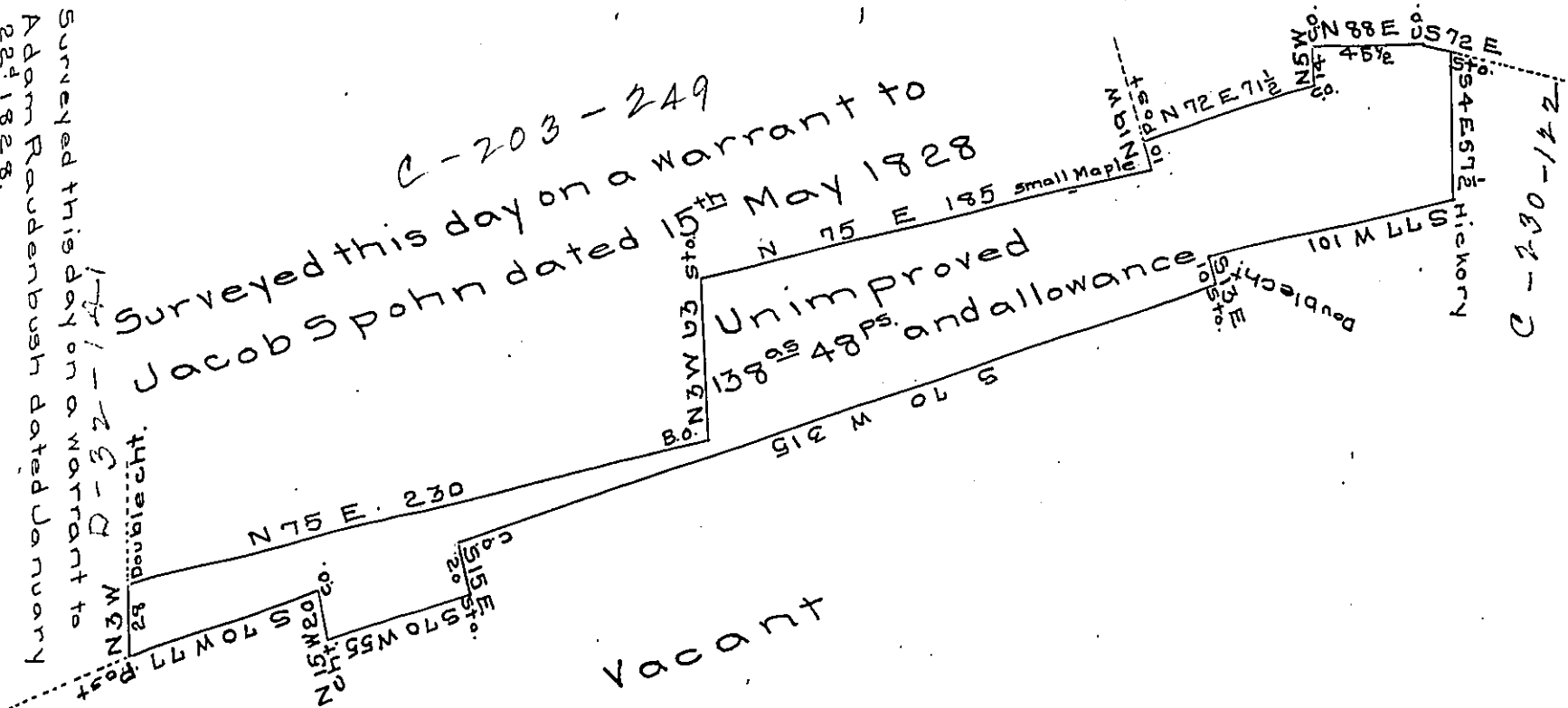


A-66-243
Peter Filbert

Surveyed this day on a warrant to Adam Raudenbush dated January 22^d 1828.

C-203-249
Surveyed this day on a warrant to Jacob Spohn dated 15th May 1828



Vacant

Situate in Pinegrove township Schuylkill county containing one hundred and thirty eight acres and forty eight perches and the allowance of six percent surveyed on the 4th day of June 1828 in pursuance of a warrant dated the 15th day of May 1828 granted Adam Raudenbush.

F. Lauderbrun
Deputy Surveyor of
Schuylkill County

To Gabriel Hiester Esquire
Surveyor General of Penna.

IN TESTIMONY that the above is a copy of the original remaining on file in the Department of Internal Affairs of Pennsylvania, made conformably to an Act of Assembly approved the 16th day of February, 1833, I have hereunto set my Hand and caused the Seal of said Department to be affixed at Harrisburg, this twentieth day of November 1906.

Gaebel Brown
Secretary of Internal Affairs.